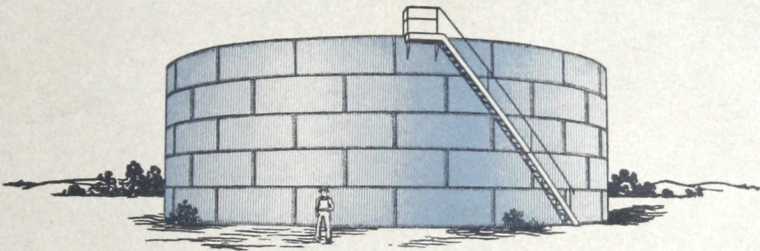


911-2.

LIBRARY
THE FRANKLIN INSTITUTE

MAY 24 1922

STEEL PLATE CONSTRUCTION



RITER-CONLEY COMPANY
Pittsburgh

FRANKLIN INSTITUTE

PHILADELPHIA

FRANKLIN INSTITUTE
PHILADELPHIA

Steel Plate Construction

Steel Storage Tanks, Oil Refineries
Blast Furnaces, Gas Holders, Penstocks
Riveted Steel Pipe
Galvanized or Painted Transmission Towers
Stacks, Standpipes, Ladles
Steel River Barges
Steel Plate Work of Every Description



RITER-CONLEY COMPANY

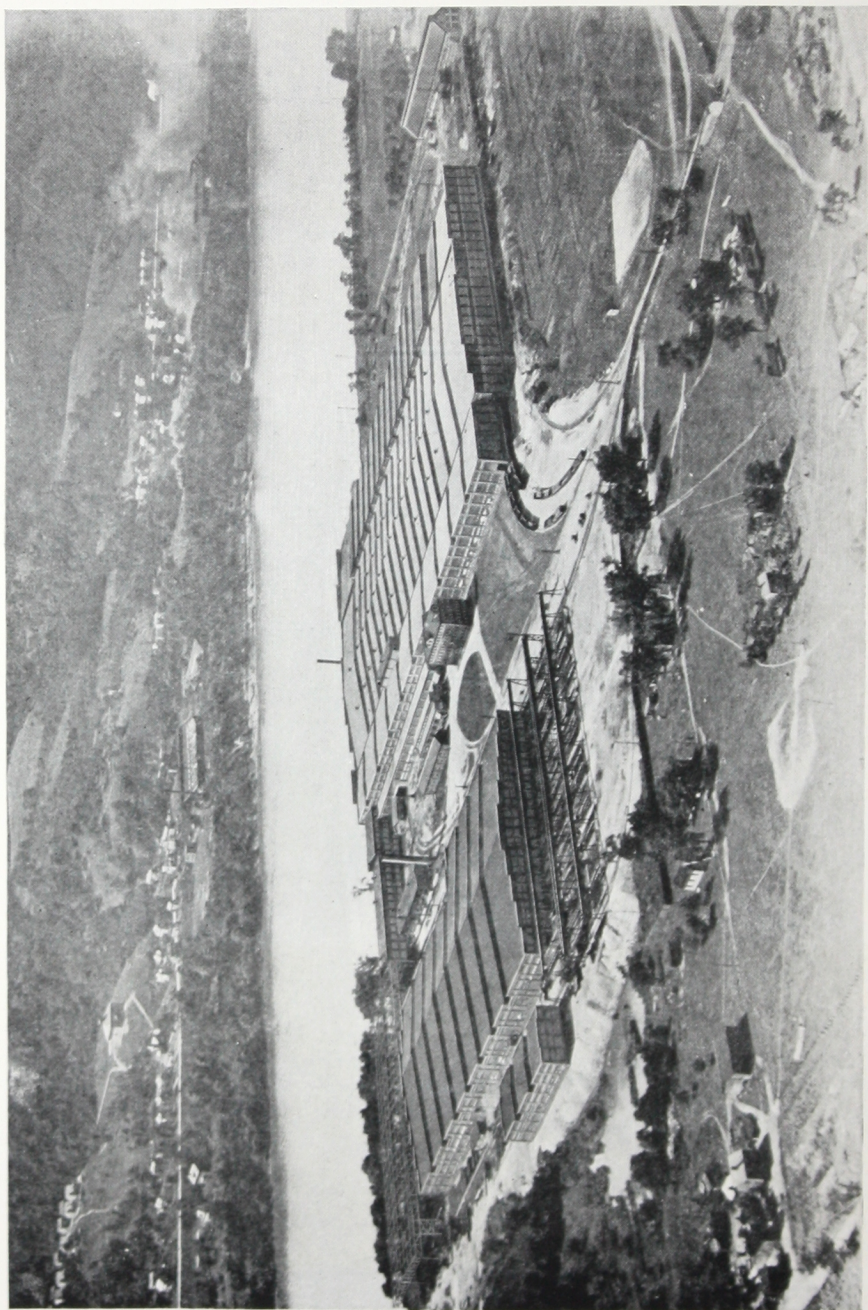
Steel Plate Construction

General Offices: 318 Oliver Building, Pittsburgh, Pa.

Boston, Mass., 68 Devonshire Street	Philadelphia, Pa., Morris Building
Chicago, Ill., 1st National Bank Building	San Francisco, Cal., Call Building
Cincinnati, Ohio, Union Central Building	Seattle, Wash., Colman Building
Cleveland, Ohio, Hanna Building	Syracuse, N. Y., University Building
Detroit, Mich., Book Building	Washington, D. C., Munsey Building
New York City, 50 Church Street	

Foreign Contract Dept.: 50 Church St., New York City, U. S. A.

RITER-CONLEY COMPANY



Aeroplane View of the RITER-CONLEY Plant, Located at Leetsdale, Pennsylvania, in the Pittsburgh District
The Largest Plate Shops in the World

10 88-B13210 TCF

F
fact
suc
acc
serv

and
ship
com
pin
larg
exp

STEEL PLATE CONSTRUCTION



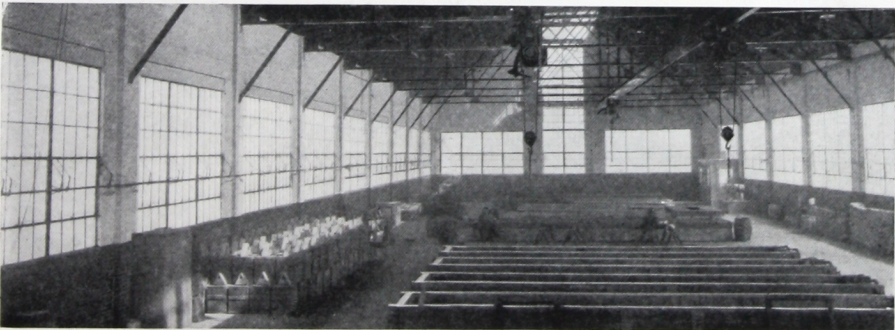
Partial Interior View of Riter-Conley Shop No. 1

An Introduction

BY means of this booklet we present an idea of the scope and diversity of our work. During a period of over forty years we have demonstrated our ability to render satisfactory service by the design, manufacture and erection of steel plate products of all kinds. That we have been successful is perhaps best proven by the oft repeated patronage we are accorded and by the large number of clients whom we have the pleasure of serving.

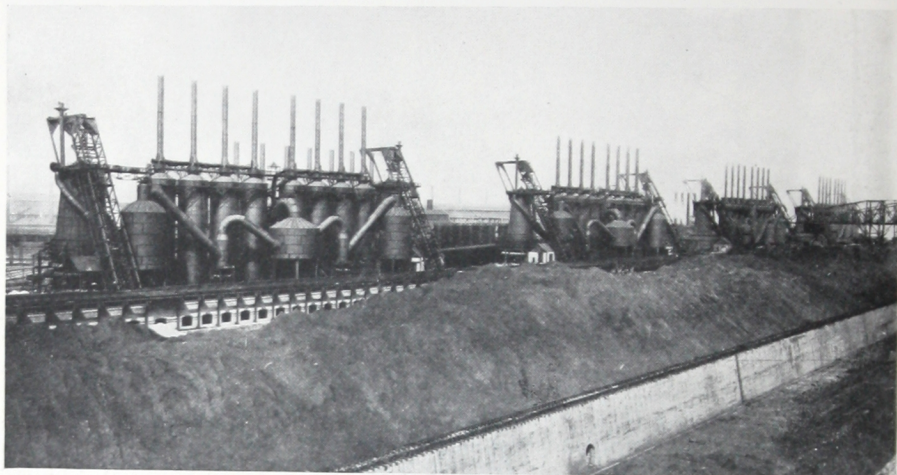
The methods and machinery we employ are of the most modern character, and good working conditions assure a high standard of quality and workmanship. Large fabricating shops which cover an area of nearly 26 acres, a complete galvanizing plant, and adequate facilities for the handling and shipping of materials, aid us to perform satisfactorily on any order, whether large or small. Finally, back of these facilities are thoroughly capable and experienced engineers who give detailed attention to each requirement.

We invite your inquiries.



Interior of Riter-Conley Hot Galvanizing Building. Annual Capacity 18,000 Tons of Galvanized Material

Blast Furnace Plants



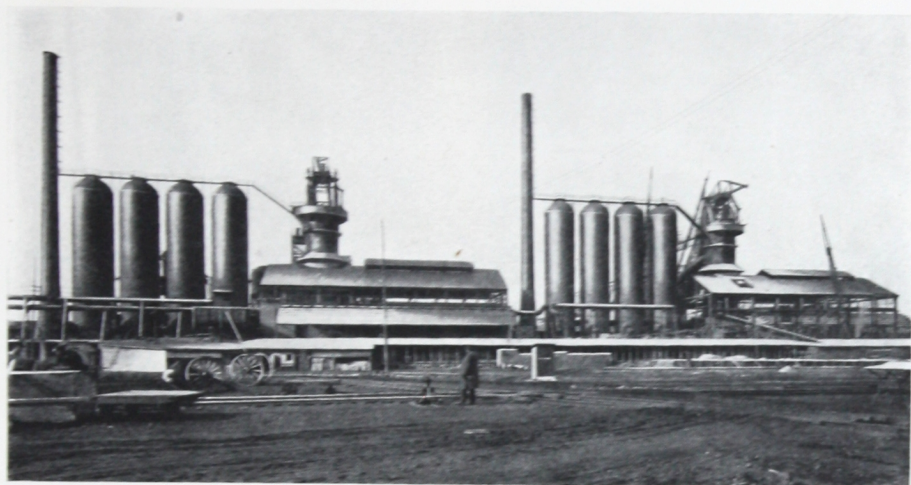
Battery of Blast Furnaces Built for Indiana Steel Co., Gary, Ind.



600-Ton Blast Furnace Built for Pittsburgh Crucible Steel Company
Midland, Pa.

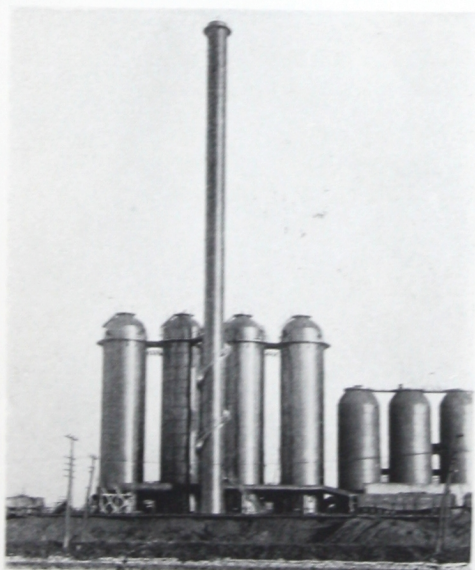
We are one of the pioneer builders of blast furnaces in America. Our knowledge and experience in blast furnace construction render us particularly capable of handling this work.

Blast Furnace Plants



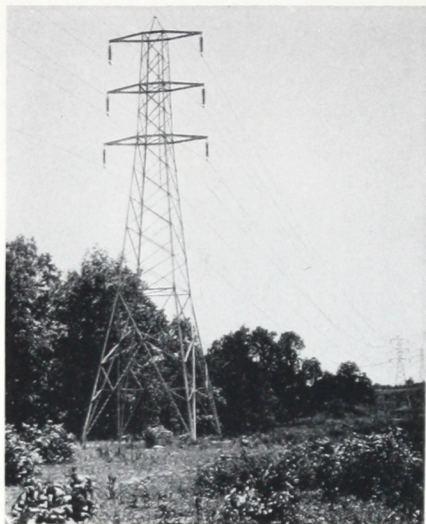
Two 500-Ton Blast Furnaces Built for Ford Motor Co., Detroit, Mich.

Blast furnace plants designed, manufactured and erected complete, ready for operation. Our past performances are a good criterion of our future capabilities.

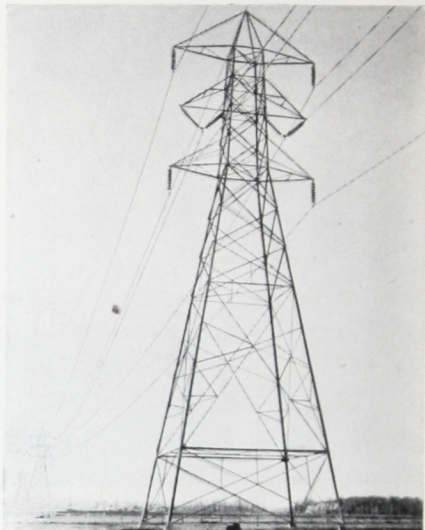


10' x 250' Stack and Four Stoves Built for Illinois Steel Co. Joliet, Ill.

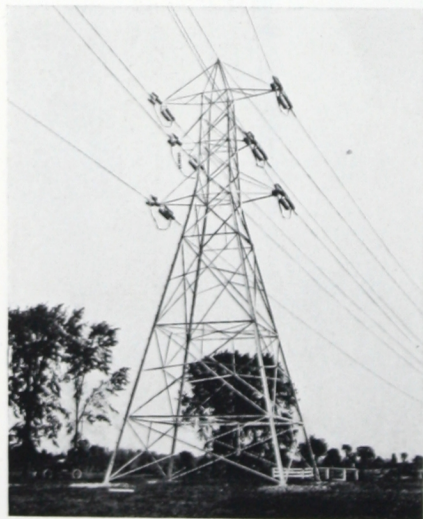
Transmission Towers



Suspension Transmission Towers Furnished the Mississippi River Power Company. This Line is for 110,000 Volts



Suspension Transmission Towers with Extension Furnished the Aluminum Co. of America. 110,000 Volt Line



Dead End and Angle Towers with Extension. The Cedar Rapids-Massena Transmission Line, Northern New York State



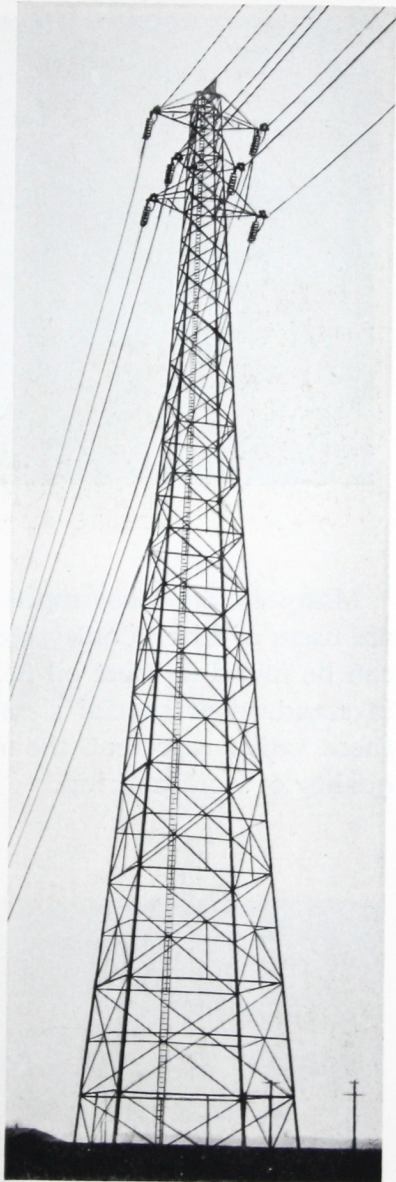
Flexible "A" Frame Transmission Tower Line, Built for Eastern Pennsylvania Power Co.

Transmission Towers

We have furnished steel transmission towers for some of the most important tower projects in the world. Our ample resources, excellent facilities and wide experience in the designing and fabricating of transmission towers give us the ability to fulfill the most exacting requirements.

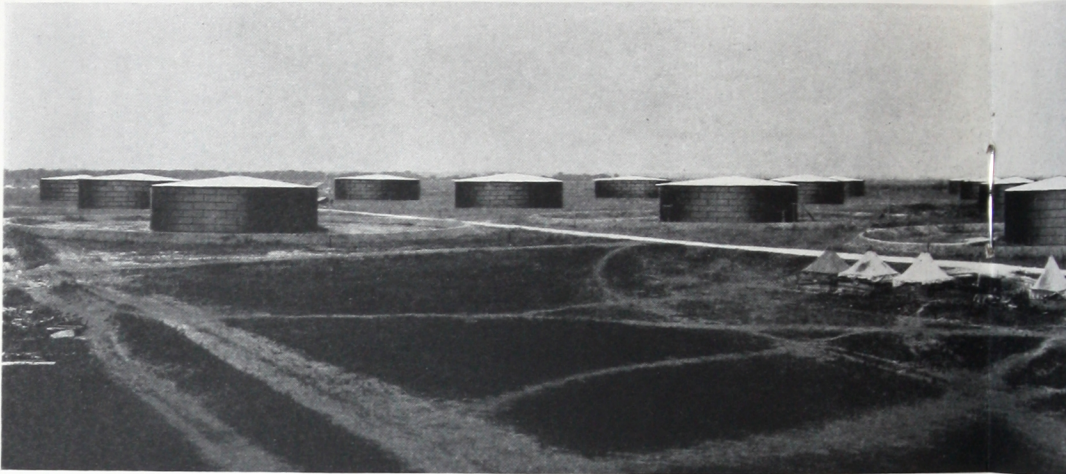
Up-to-date equipment is employed to insure good workmanship.

In connection with this work we operate a modern galvanizing plant. (Illustration is shown on page 3.)



200' River-Crossing Tower Furnished the Aluminum Co. of America. These Towers Carry a Transmission Line over the St. Lawrence River

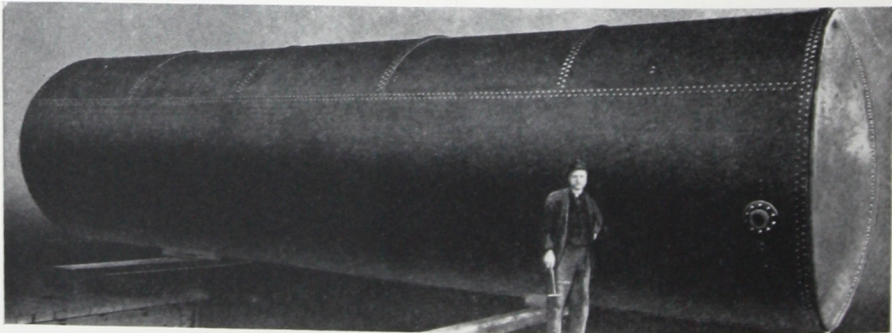
Oil Storage Tanks



Farm of Riter-Conley Standard 55,000-Bbl. Tanks Built for Hum

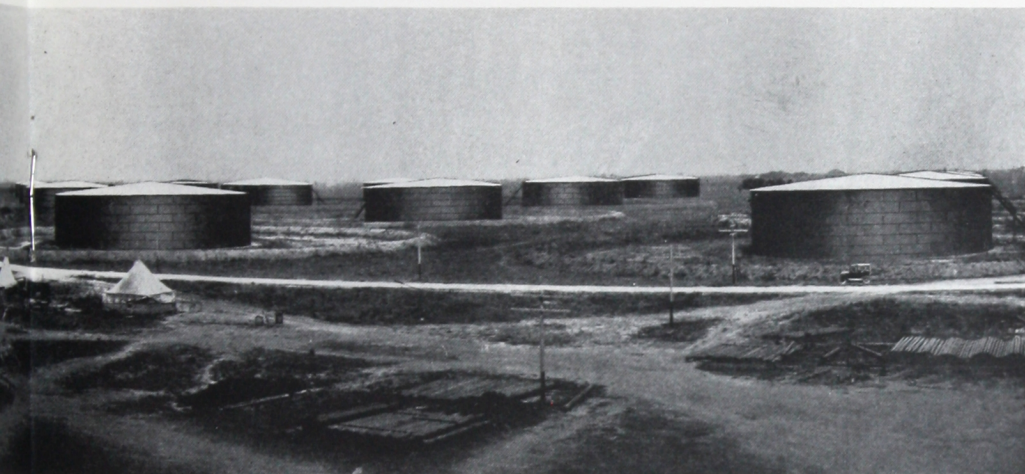
Many of the most representative concerns in the oil industry are users of Riter-Conley steel storage tanks. Riter-Conley tanks can be found in most oil fields throughout the world. Furnished in standard or special sizes from 500 to 80,000-barrel capacity, these tanks represent the most modern design and the highest quality of workmanship.

Stills



One of 24 Asphalt Stills, 11' Diam. x 40' Long, Furnished Asiatic Petroleum Company

Oil Storage Tanks



Tanks Built for Humble Pipe Line Co., League City, Texas

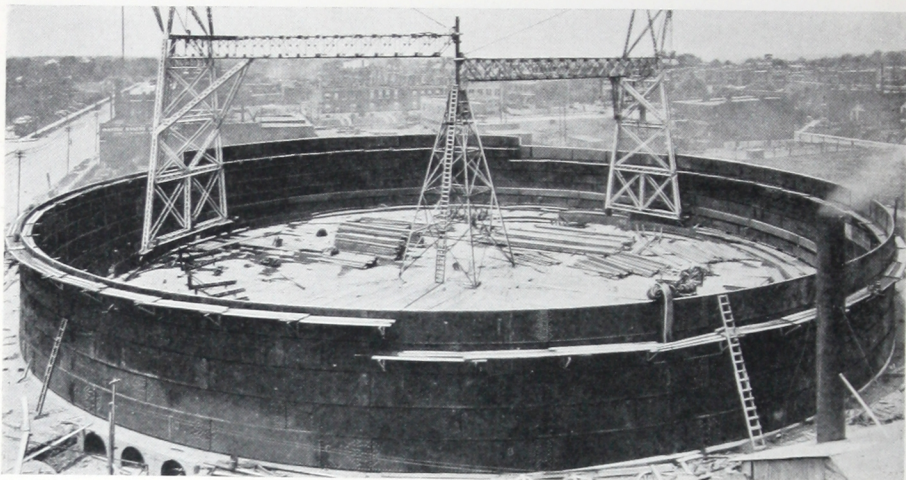
Order standard sizes. They cost less and can be shipped promptly

STANDARD SIZES—OIL STORAGE TANKS

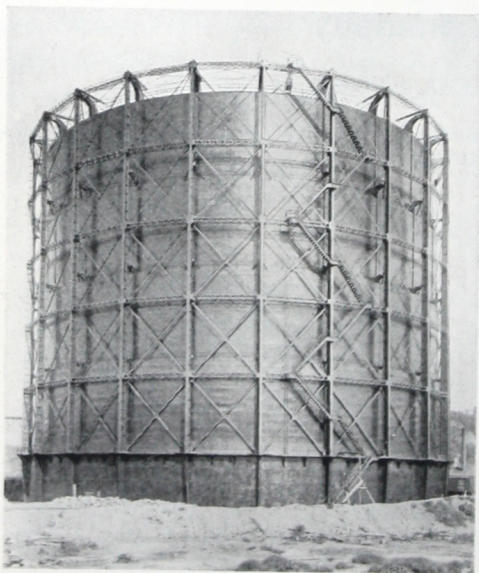
Capacity	Diameter	Height
80,000 Bbl.	120' 0"	40' 0"
73,000 "	114' 7"	40' 4"
64,000 "	114' 7"	35' 4"
55,000 "	114' 7"	30' 4"
37,500 "	94' 6"	30' 6"
35,000 "	95' 5 $\frac{1}{2}$ "	28' 7 $\frac{1}{2}$ "
30,000 "	85' 0"	30' 3 $\frac{1}{2}$ "
25,000 "	85' 0"	25' 6"
20,000 "	77' 0"	25' 0"
15,000 "	66' 0"	25' 0"
10,000 "	55' 0"	25' 3 $\frac{7}{8}$ "
5,000 "	40' 0"	22' 6"
4,000 "	35' 0"	24' 0"
3,000 "	30' 0"	24' 0"
2,500 "	30' 0"	20' 0"
2,000 "	30' 0"	16' 0"
1,500 "	25' 0"	17' 2"
1,000 "	22' 0"	15' 0"
500 "	20' 0"	10' 0"

We also manufacture steel tanks for storing grain and all kinds of liquids including chemicals and molasses

Gas Holders, Purifiers, Etc.



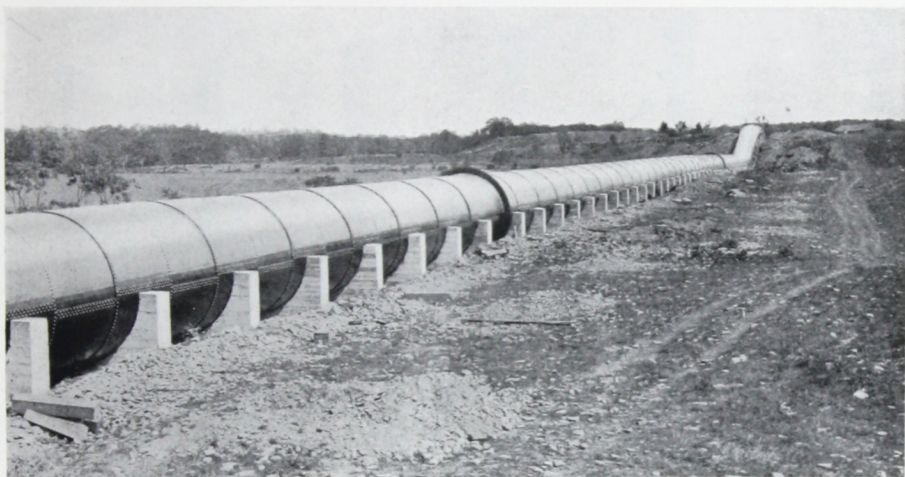
5,000,000 Cu. Ft. Gas Holder During Course of Erection for the Laclede Gas Light Co. St. Louis, Mo.



3,000,000 Cu. Ft. Gas Holder Built for St. Paul Gas Light Co. St. Paul, Minn.

We design, manufacture and erect complete gas plants and gas holders. Those who contemplate construction of this nature will find it to their advantage to secure our prices.

Penstocks and Pipe Lines



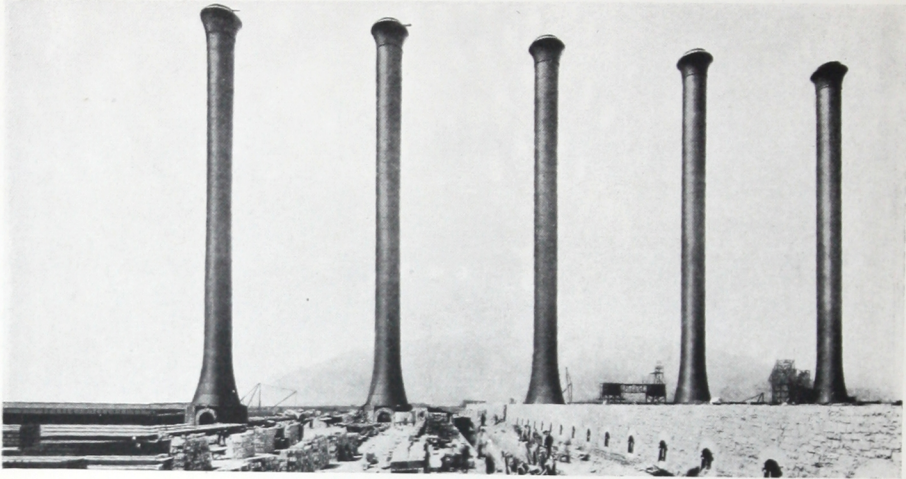
12' 0" Diam. Penstock—Salmon River Power Co., Altmar, N. Y.

Riter-Conley steel pipe can be found on important pipe line projects throughout the world. Having done this class of work for many years, we feel capable of performing satisfactorily on all riveted steel pipe requirements.



10' 0" Diam. Penstock—Jawbone Canyon Syphon, City of Los Angeles, Cal.

Stacks and Standpipes



200' Riter-Conley Stacks—New England Coke & Gas Company



We Build Steel Standpipes of Every Description

Stacks and standpipes
manufactured and erected.
We have modern equipment
and skilled men to do this
class of work correctly and
satisfactorily.

We invite your inquiries.

Ladles for Steel and Glass



A Group of Riter-Conley Ladles for the Pittsburgh Steel Co.

Our ladle department has every facility for the economical manufacture of ladles for steel or glass. We are fitted by experience to build ladles for steel plants.

To glass manufacturers we offer a very satisfactory service on steel ladles for glass-making.

We use a grade of steel especially suited for severe service. Powerful presses produce ladles of smooth surface and uniform thickness.

Write for Folder L.

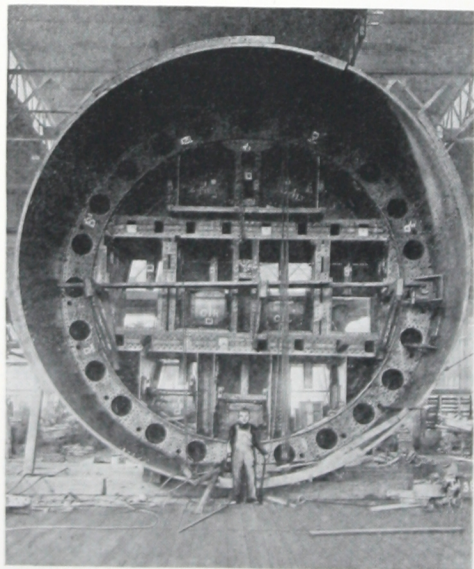


Glass Ladles of Various Sizes

Other Steel Plate Work



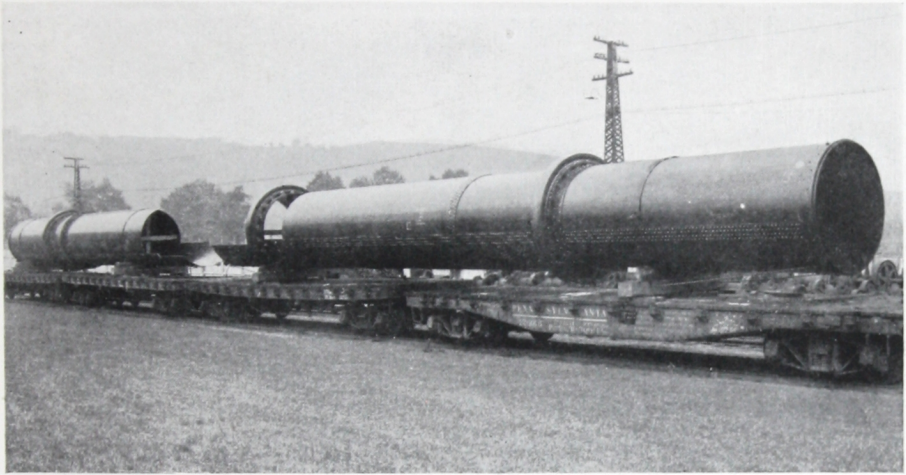
Part of a Series of Sugar Crystallizers Furnished United Fruit Co., Cuba



Shield Used in Building the Pennsylvania Tunnel under the North River, New York City—23' 6" Outside Diam.

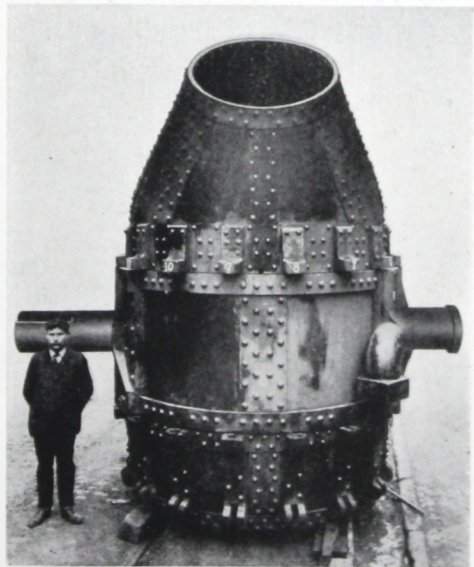
We are prepared to execute orders for all classes of steel plate construction no matter how novel or complicated.

Other Steel Plate Work



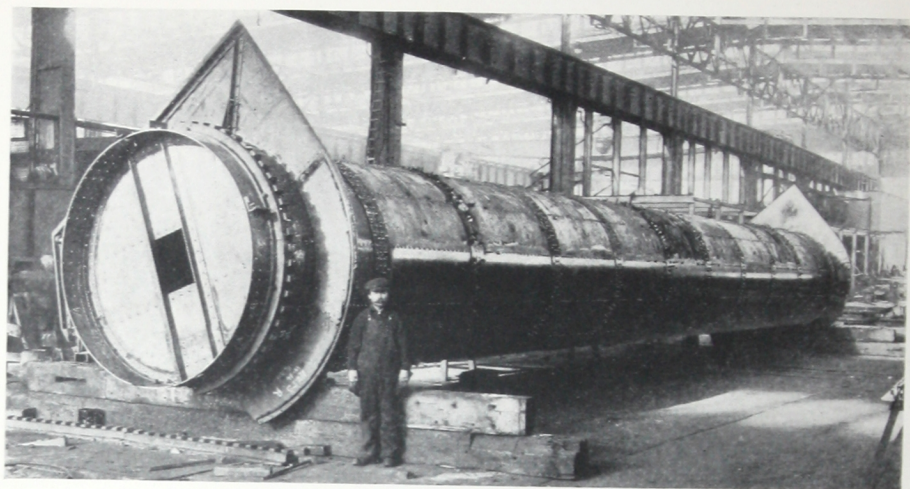
Rotary Kilns Furnished Universal Portland Cement Co.

Our large shops give us the ability to fabricate steel plate products of all kinds. Converters and kilns manufactured efficiently and economically.



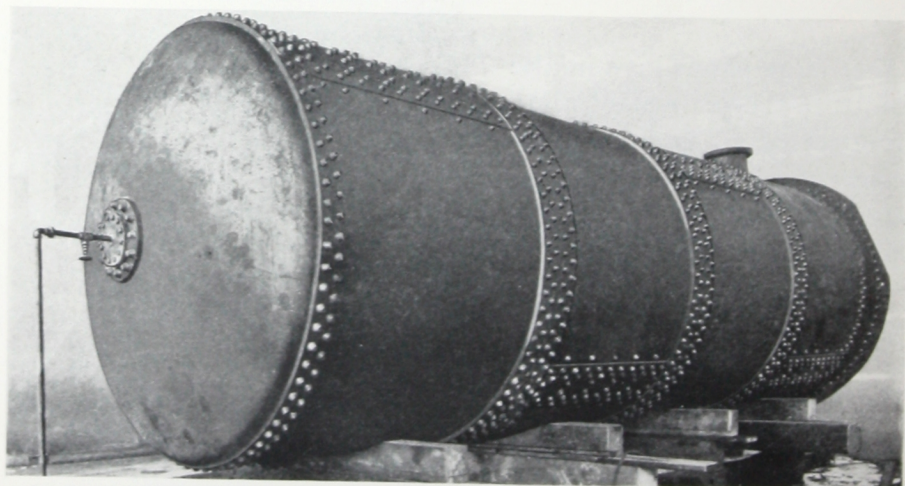
Bessemer Converter Furnished
Carnegie Steel Co.

Other Steel Plate Work

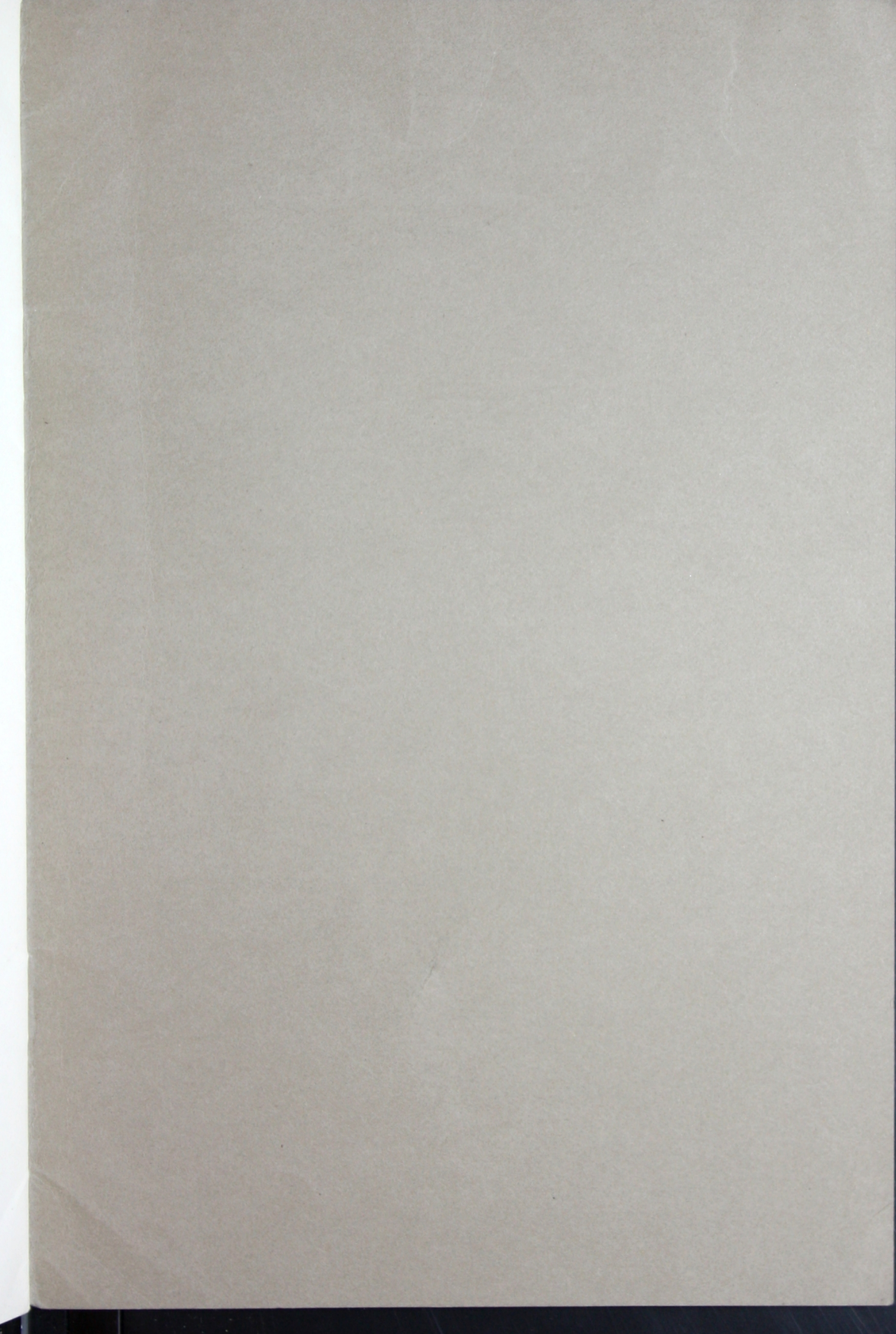


Revolving Crest for Dam, Furnished U. S. Reclamation Service

We are in excellent position to do miscellaneous steel plate work of every description. No matter how difficult the work, we are capable of handling it.



High Pressure Tank—9' 4" Diam. x 30' Long, Shell $1\frac{1}{4}$ " , Heads $1\frac{5}{16}$ " ,
Furnished Mesta Machine Company





STEEL PLATE

RITER-CONLEY

CONSTRUCTION